



# MONTHLY MEMBERSHIP PROGRESS REPORT

District 31 N

Results as of: 2/28/2017

GMT: HARVEY WHITLEY

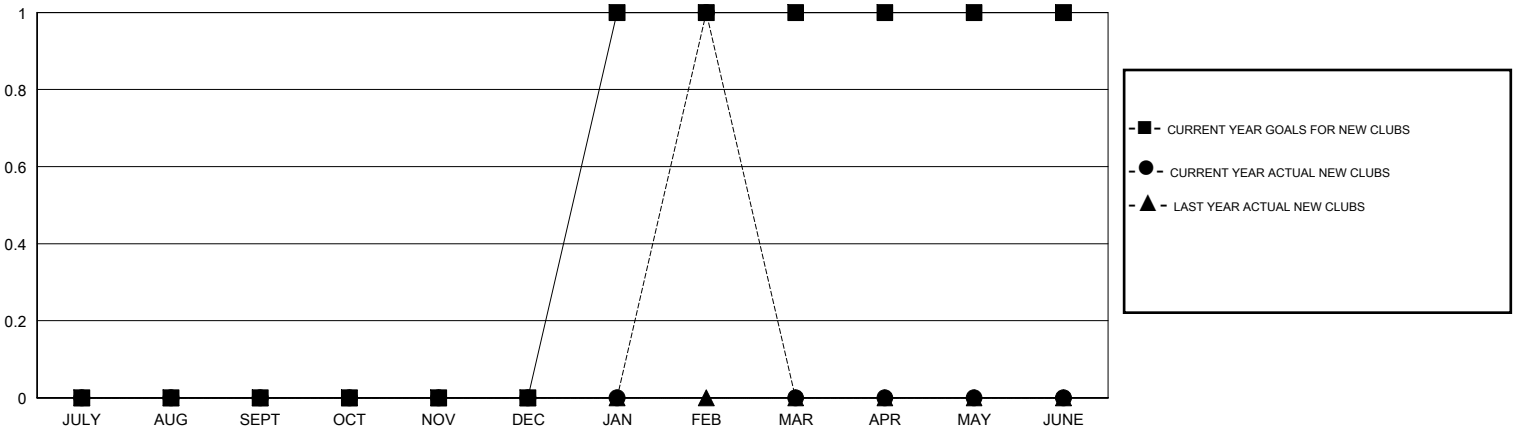
LOCATION NORTH CAROLINA

GMT CA

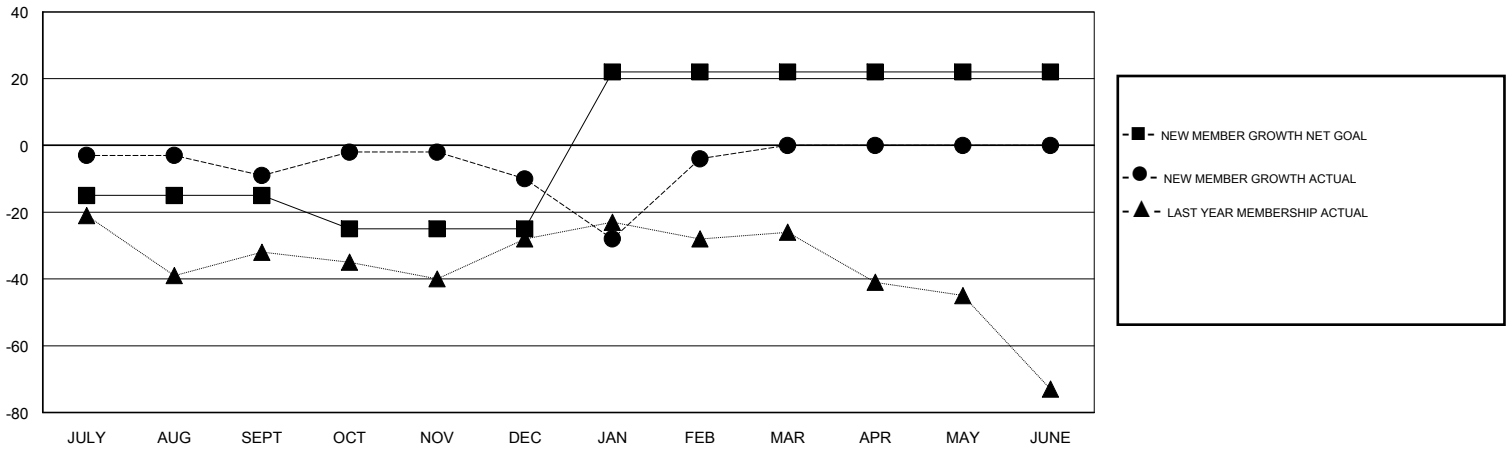
Clubs			
RESULTS FOR 2016-2017			
QUARTER	NEW CLUB GOAL	NEW CLUBS	DROPPED CLUBS
JULY/AUG/SEPT	0	0	0
OCT/NOV/DEC	0	0	1
JAN/FEB/MAR	1	1	0
APR/MAY/JUNE	0	0	0

Members			
RESULTS FOR 2016-2017			
QUARTER	NEW MEMBER GROWTH NET GOAL (not reinstated or transfers)	NEW MEMBER GROWTH ACTUAL (not reinstated or transfers)	DROPPED MEMBERS ACTUAL (including transfers)
JULY/AUG/SEPT	-15	51	60
OCT/NOV/DEC	-10	27	28
JAN/FEB/MAR	47	44	38
APR/MAY/JUNE	0	0	0

GOALS AND ACTUAL NEW CLUBS CUMULATIVE



GOALS AND ACTUAL MEMBERS CUMULATIVE



DROPPED CLUBS: 1	32 CLUBS OF 63 ADDED 1 OR MORE NEW MEMBERS	<u>GENDER DISTRIBUTION</u>
DROPPED MEMBERS	<a href="#">CLICK HERE FOR CUMULATIVE MEMBERSHIP DATA</a>	MALE 882 (69.83%)
DECEASED 15		FEMALE 381 (30.17%)
CLUB CANCELLED 0		TOTAL FAMILY UNIT MEMBERS 249
OTHER 111		FAMILY MEMBERS PAYING HALF DUES 127
<b>TOTAL 126</b>		